



Capability Statement

2023 - 2024





COMPANY PROFILE

Fleetwood House

480 Bath Road

Slough

Berkshire

SL1 6BB

CONTENTS

- Introduction
- Our Services
- About FAA
- Senior Leadership Team
- Company Structure
- Projects
- Case Studies
- Supply Chain Partners



INTRODUCTION TO FLEETWOOD

Fleetwood Architectural Aluminium is a specialist contractor involved in the design, manufacture and installation of façades, curtain walling and Rainscreen cladding.



We deliver high quality building envelopes, on time every time, by continuously investing in the best people and technology and partnering our customers to provide an experience that exceeds their expectations and inspires a generation.

The company, which was founded in 1997 and has over 150 direct employees, prides itself on the excellence of the service we provide to our customers. There are only a few companies in today's facade industry that can provide the same level of in-house capability as Fleetwood.

We took the decision to consolidate the company's operations, previously spread across three locations, onto a single impressive new site in Slough. The aim of the move was to increase operating efficiency, provide an enhanced service offering to our clients and expand manufacturing capability not just in terms of volume, but also by handling pressed metal. It would also allow for the expansion of Fleetwood's unitised operation enabling us to compete directly with large European fabricators.

Our unified management structure enables a consistent and flexible level of service to all clients with the benefit of our experience being brought to each project.

Whilst we pride ourselves on our flexible, collaborative and consensual approach we remain uncompromisingly focused on delivering the best for our clients.

Our Values

Safety First

A great place to work

Champions of Change

We take responsibility

Customers inspire us

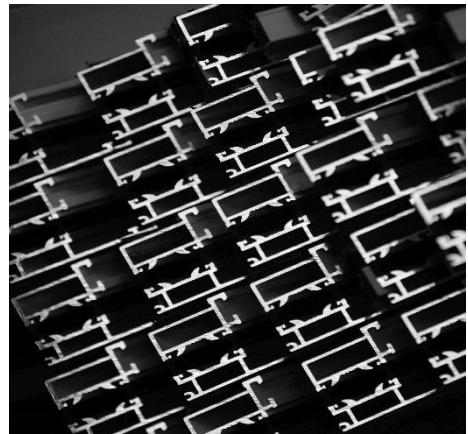
Strive for excellence

OUR SERVICES

Fleetwood are one of the UK's leading companies specialising in the design, manufacture, and installation of complete façade solutions. As well as the traditional stick systems, we also can offer the design and manufacture of unitised curtain walling and bespoke cladding systems.

With 40,000 sq/ft office and factory unit based in Slough, our facility enables us to carry out all our production under one roof and allows us to hold stock of finished material as well as base material. We are approved manufacturers of Schuco and Reynaers systems, however where required we can provide bespoke cladding solutions.

Fleetwood have grown to be one of the largest privately owned facade contractors in the UK with a turnover more than £22 million and have an impressive reputation for delivering the most demanding projects. As a sub-contractor we have maintained a financially secure balance sheet to support the reliance that clients can place upon our warranty.



In addition to the Aluminium Windows, Doors, Stick & Unitised Curtain Walling, we also design, manufacture and install more traditional cladding works including:

- > Lightweight steel walling
- > Insulated render
- > Terracotta cladding
- > Timber cladding
- > Metal Rainscreen cladding including - Aluminium, zinc, stainless steel and copper
- > High performance Rainscreen cladding including - Trespa, Rockpanel and Eternit products
- > Solar shading
- > Ancillary metal flashing and copings
- > Bespoke solar shading

Capability Statement
About Fleetwood



ABOUT FLEETWOOD

> Profile

Fleetwood Architectural Aluminium design, manufacture and install commercial Aluminium glazing products to the UK construction industry. The company is privately owned and was established in 1997 and now employs over 150 staff. Our current turnover is more than £22m GBP.

> Geography

Fleetwood have successfully delivered schemes throughout the UK. Our operational boundaries are now considered limitless for the right scope of works. Our regional centres are based at either end of the M4 corridor in Slough with additional offices in the Midlands.

> Mission Statement

We deliver high quality building envelopes, on time every time, by continuously investing in the best people and technology and partnering our customers to provide an experience that exceeds their expectations and inspires a generation.

> Our Aims

- > Inspire our people to develop their full potential.
- > Maintain our reputation as our customer's facade contractor of choice.
- > Develop constructive, long term supply chain relationships with selected clients.
- > Expand our customer and product portfolio.
- > Ensure we deliver quality products on time by managing risk and increasing efficiency.
- > Lead the market through investment, innovation and quality of service.
- > Offer our customers value for money with our bespoke engineering solutions.
- > Increase effective turnover beyond £30 million by 2020.

> Facilities

We currently have a manufacturing facility in Slough (Berkshire) of 40,000 square feet, complimented by a separate 20,000 square foot facility that is dedicated to pressed metal work, powder coating and welding based in Redditch. Fleetwood have also developed bespoke operating software to manage the quotation database, production and site-based operations.

> Staff

Delivery of projects is dealt with by an Operations Manager, Design Team Leader, Draughtsman, Quantity Surveyor and a Buyer as well as a number of Project Managers and Site Managers. Sales and estimating, accounts and HR are centralised in Slough. All our subcontractors are thoroughly vetted as part of our in-house QA for new subcontractors.

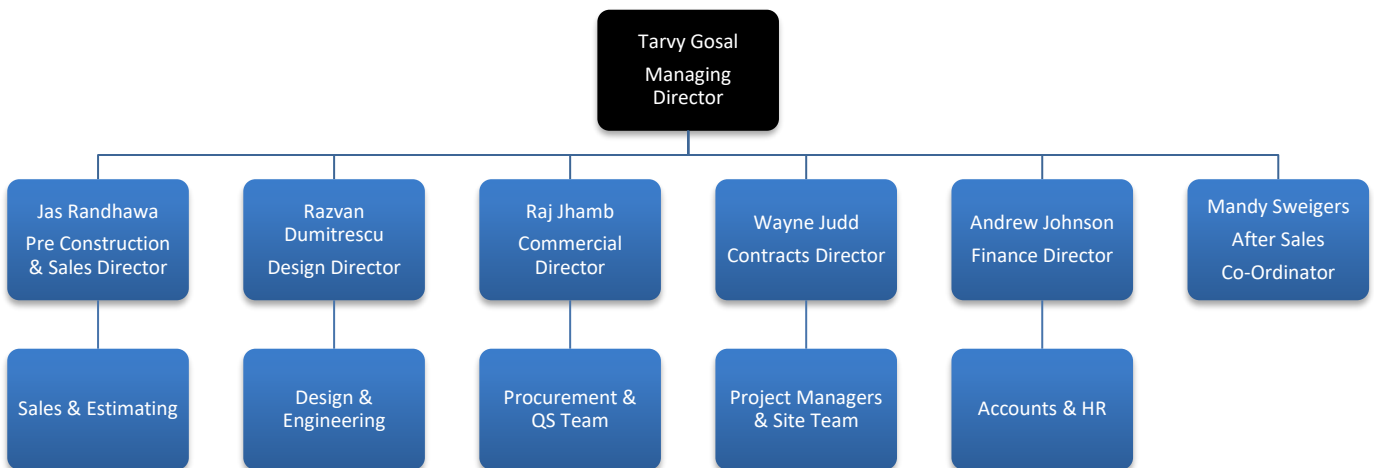
> Products and scope

Fleetwood have successfully completed the installation of windows, doors, curtain walling, unitised systems, multiple Rainscreens, brise soleil and fire rated products. We are currently approved fabricator/installers of Reynaers, Schuco and leading cladding systems.

Currently Fleetwood have manufacturing, design, and project management facilities to successfully deliver schemes between £2 Million and £15 Million.



COMPANY STRUCTURE



PROJECTS

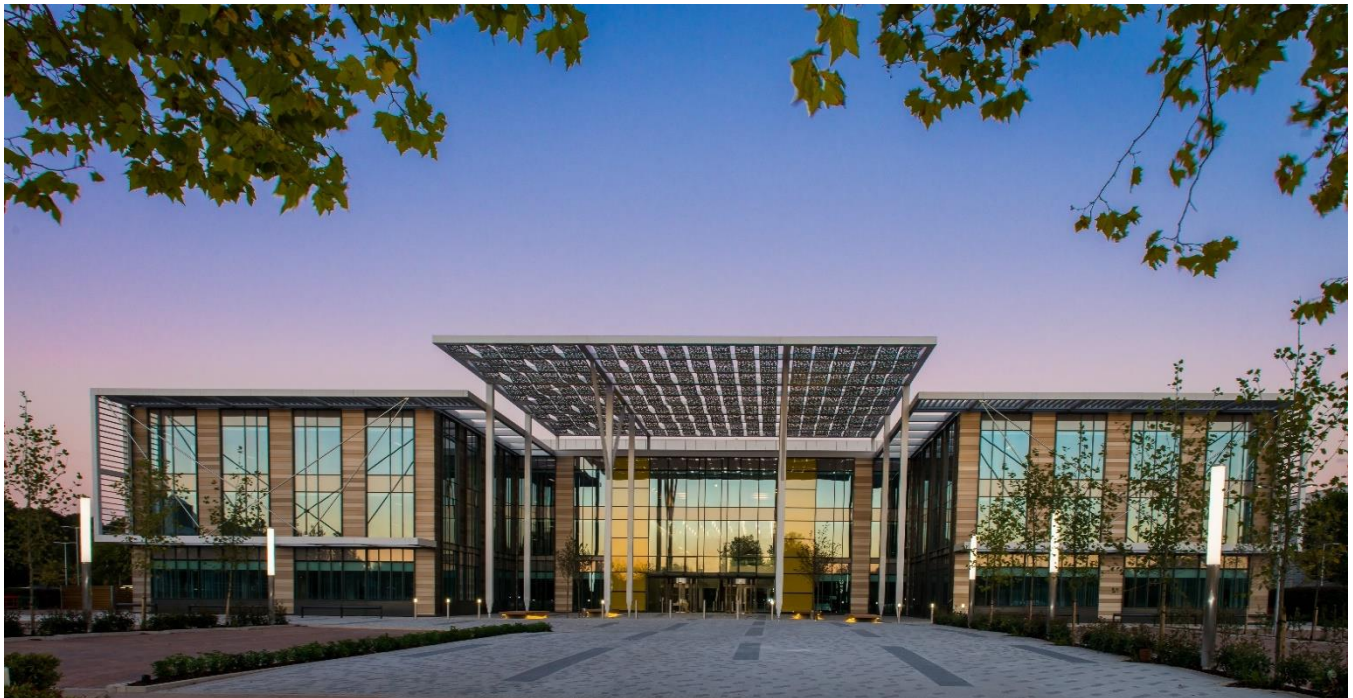
Completed Projects

Project	Contractor	Sector	System	Value	Scope
Embassy Gardens	Ballymore	Residential	Schuco	£11,500,000	External Envelope
Greenwich	Mace	Residential	Reynaers	£10,200,000	External Envelope
The Residence, Nine Elms	Bellway Homes	Residential	Reynaers	£9,500,000	CW, Windows & Doors
Riverlight	St James	Residential	Schuco	£6,100,000	Doors / CW and Cladding
Wembley, South West Lands	McAlee & Rushe	Residential	Reynaers	£5,900,000	CW, Windows & Doors
Kensington Row – Block J	Berkeley Homes	Residential	Reynaers	£5,600,000	External Envelope
Kensington Row – Block F	Berkeley Homes	Residential	Reynaers	£5,600,000	External Envelope
Exchange Square	McAlee & Rushe	Residential	Schuco	£5,600,000	External Envelope
Cabot Square	Paragon	Commercial	Schuco	£4,800,000	CW, Windows & Doors
R3 – Project Lunar	McLaren	Residential	Schuco	£4,700,000	CW, Windows & Doors
Westminster City Hall	ISG	Commercial	Schuco	£4,300,000	CW, Windows & Doors
Rosalind Franklin Institute	Mace	Commercial	Schuco	£4,000,000	External Envelope
Chelsea Creek	JPC	Residential	Schuco	£3,500,000	Unitised CW, Windows & Doors
Gillender Street	Mount Anvil	Residential	Reynaers	£3,500,000	CW, Windows & Doors
Q1 – King's Cross	BAM	Commercial	Schuco	£3,400,000	External Envelope
Project Bower	ISG	Commercial	Schuco	£3,200,000	External Envelope
Berkeley Street	DE Construction	Commercial	Schuco	£3,200,000	CW, Windows & Doors
King's Court	Blenheim House	Commercial	Reynaers	£3,100,000	External Envelope
National Satellite Testing Facility	Mace	Commercial	Schuco	£3,000,000	External Envelope
Shared Facilities Hub	Bouygues	Educational	Schuco	£2,900,000	External Envelope
Farnborough Business Park	Kier	Commercial	Schuco	£2,800,000	External Envelope
Strata 1	Kier	Commercial	Schuco	£2,500,000	CW and Cladding
1 New Oxford St.	Mace	Commercial	Reynaers	£2,300,000	CW, Windows & Doors
Wexham Park Hospital – ED	Kier	Commercial	Reynaers	£2,300,000	External Envelope
Binfield Learning Village	Mace	Educational	Reynaers	£2,200,000	CW, Windows & Doors
Battersea Dogs & Cats Home	Sir Robert McAlpine	Commercial	Schuco	£2,100,000	External Envelope
51 Moorgate	Skanska	Commercial	Reynaers	£1,900,000	CW, Windows & Doors
Q2 – King's Cross	BAM	Commercial	Schuco	£1,800,000	External Envelope
Barlby School	Mace	Educational	Reynaers	£1,300,000	CW, Windows & Doors

PROJECTS

Current Projects

Project	Contractor	Sector	System	Value	Scope
Westbury Hotel	Sir Robert McAlpine	Commercial	Kawneer	£4,500,000	External Envelope
The Landmark	Hart Dixon	Residential	-	£4,900,00	Recladding
Interchange	FR Consultants	Residential	-	£5,000,000	Recladding
Celestial House	FR Consultants	Commercial	-	£5,100,00	Recladding
O Central	Axis	Residential	-	£6,400,00	Recladding
Grosvenor Waterside	Blenheim House	Commercial	-	£8,600,000	Recladding
Burton Place	Callidas	Residential	-	£14,500,000	Recladding



CASE STUDIES

Embassy Gardens

Contractor: Ballymore

Architect: Fielden Clegg Bradley

Package Value: £11,500,000

Systems: Schuco ADS65, AWS70HI, FW60+



Overview

Embassy Gardens is an outstanding development opportunity at the very heart of London in the twenty first century, a short walk from Westminster Abbey, is close to miraculous. This is undoubtedly the most exciting new chapter in the story of riverside London and quite possibly the last time the Capital will see the creation of such a completely new district, where none existed before.

2,600,000 square ft. mixed use community of apartments, office space, retail and leisure, grocery store and flexible work and community space

- > 2,000 new homes
- > Potential for up to 600,000 sq. ft of office space
- > More than 100,000 sq. ft of retail and leisure space
- > 100 bed hotel
- > New Embassy Plaza
- > New linear park linking Vauxhall with Battersea Park

CASE STUDIES

Greenwich Square

Contractor: Mace

Architect: Make

Package Value: £10,200,000

Systems: Reynaers CS86HI



Overview

Greenwich Square is an exciting new residential address created around a vibrant public square, including leisure facilities, a range of retail amenities and providing a diverse mix of apartments, maisonettes and townhouses. Our vision for Greenwich Square is to create a vibrant and cohesive new neighbourhood for the local area. Greenwich Square will bring high quality new homes and a diverse range of exciting community pleasantness, aimed at enhancing the lifestyles of new and existing residents of the Royal Borough of Greenwich.

CASE STUDIES

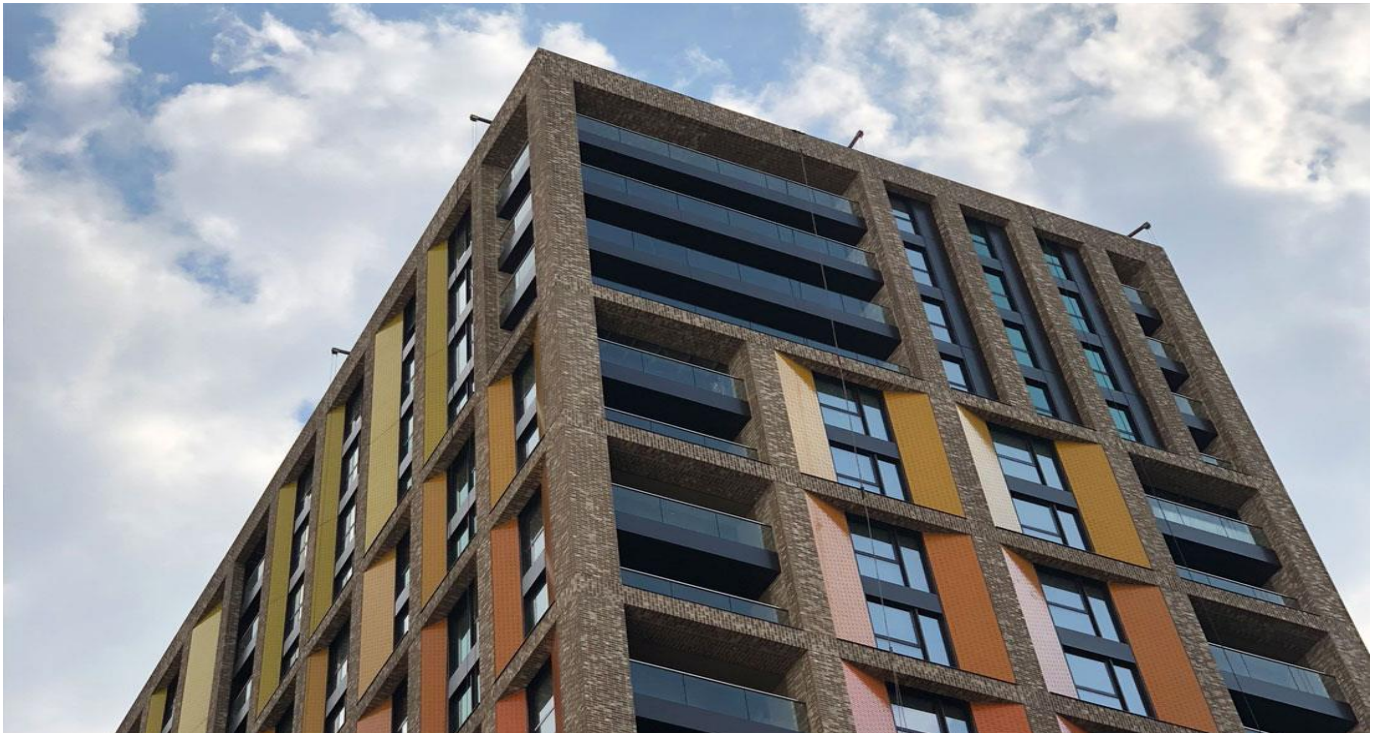
The Residence, Nine Elms

Contractor: Bellway Homes

Architect: GRID

Package Value: £9,500,000

Systems: Reynaers CS 77HI, CP155 LS, CW60



Overview

The Residence at Nine Elms is a luxurious development of 1, 2 and 3-bedroom apartments on London's South Bank. It forms part of the major transformation of this once industrial area into a thriving residential and business district at the heart of the capital by offering picturesque views over the River Thames, parks and public spaces.

CASE STUDIES

Riverlight

Contractor: St. James

Architect: BDP

Package Value: £6,100,000

Systems: Schuco ASS70HI, AWS65, FW50+, FW60+



Overview

On the riverfront, in the first phase of Nine Elms on the South Bank, one of the UK's largest and most elegant regeneration areas. Six modern and elegant pavilions specifically designed to maximise the sunlight within and optimise the visualisation.

Riverlight is at the heart of a riverside lifestyle. The central Riverlight Pavilion, surrounded by private gardens and the piazza, affords dramatic views up and down the River Thames and over the beautiful and historic boroughs of Chelsea and Westminster.

CASE STUDIES

Project Bower

Contractor: ISG

Architect: ESA Architects

Package Value: £3,700,000

Systems: Schuco FW60+ SG, AWS 114



Overview

A stone's throw from London, this iconic office upgrade located in the heart of Stockley Business Park in Uxbridge involved extending a further 20,000sq ft. of space, improving thermal performances and efficiency whilst modernizing the 1980's building to a BREEAM excellent rated office.

One of the most striking features of this project was to give a highly distinctive look and this was achieved through using the AWS114 top hung with AOV's to the atrium Rooflights and above the main entrance revolving doors & high end Brise Soleil.

CASE STUDIES

Chelsea Creek

Contractor: John Paul Construction

Architect: Broadway Malyan

Package Value: £3,500,000

Systems: Schuco FW60+, ADS65, AWS 114, ASS70HI



Overview

One of London's most iconic landmark schemes combines city living and tranquil waterside living. The tower block A will consist of 24 floors with the top 2 floors consisting of a unitised glazing system with its own roof top garden. Block B is an 8-storey residential block that mimics the traditional European feel of waterside properties.

CASE STUDIES

Strata

Contractor: Kier

Architect: ESA Architects

Package Value: £2,500,000

Systems: Schuco FW50+ SG & ADS65



Overview

Winning the “Best development outside Central London - located in Staines Upon Thames, Strata has been extensively refurbished to a high specification 90,000 sq. ft. office building. The contemporary design and triple height glass reception also benefits from underground parking and 3 levels of open planned space with a central courtyard.

CASE STUDIES

Battersea Cats & Dogs Home

Contractor: Sir Robert McAlpine

Architect: Jonathan Clark Architects

Package Value: £2,100,000

Systems: Schuco FW50+



[Overview](#)

Opened by the Queen. With over 1,200 different variations of Glazed Terracotta tiles in 12 different colours this magnificent Cats & Dogs home stands out like no other. This new state of the art veterinary clinic consists of 8 storeys boasting of training facilities, office floors, Theatre & office rooms extending into a roof terrace overlooking Battersea Power Station.

CASE STUDIES

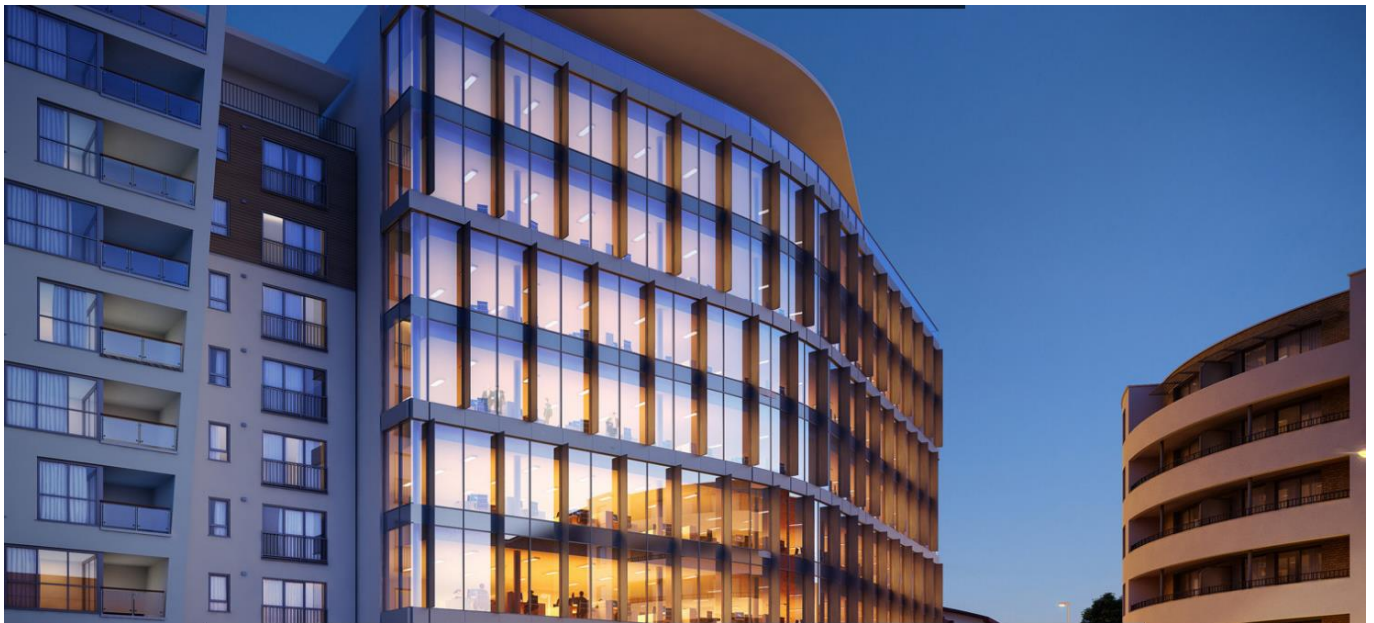
King's Court

Contractor: Blenheim House

Architect: Scott Brownrigg

Package Value: £2,700,000

Systems: Reynaers CS86 HI, CW50 SG



Overview

The first brand new office scheme in Woking for 5 years. Kings Court is a highly specified office development designed to a minimum of a very good BREEAM rating. Located over the ground and seven upper floors, the building provides over 85,000 sq. ft & has achieved 'EPC A' rating.

Supply Chain Partners

